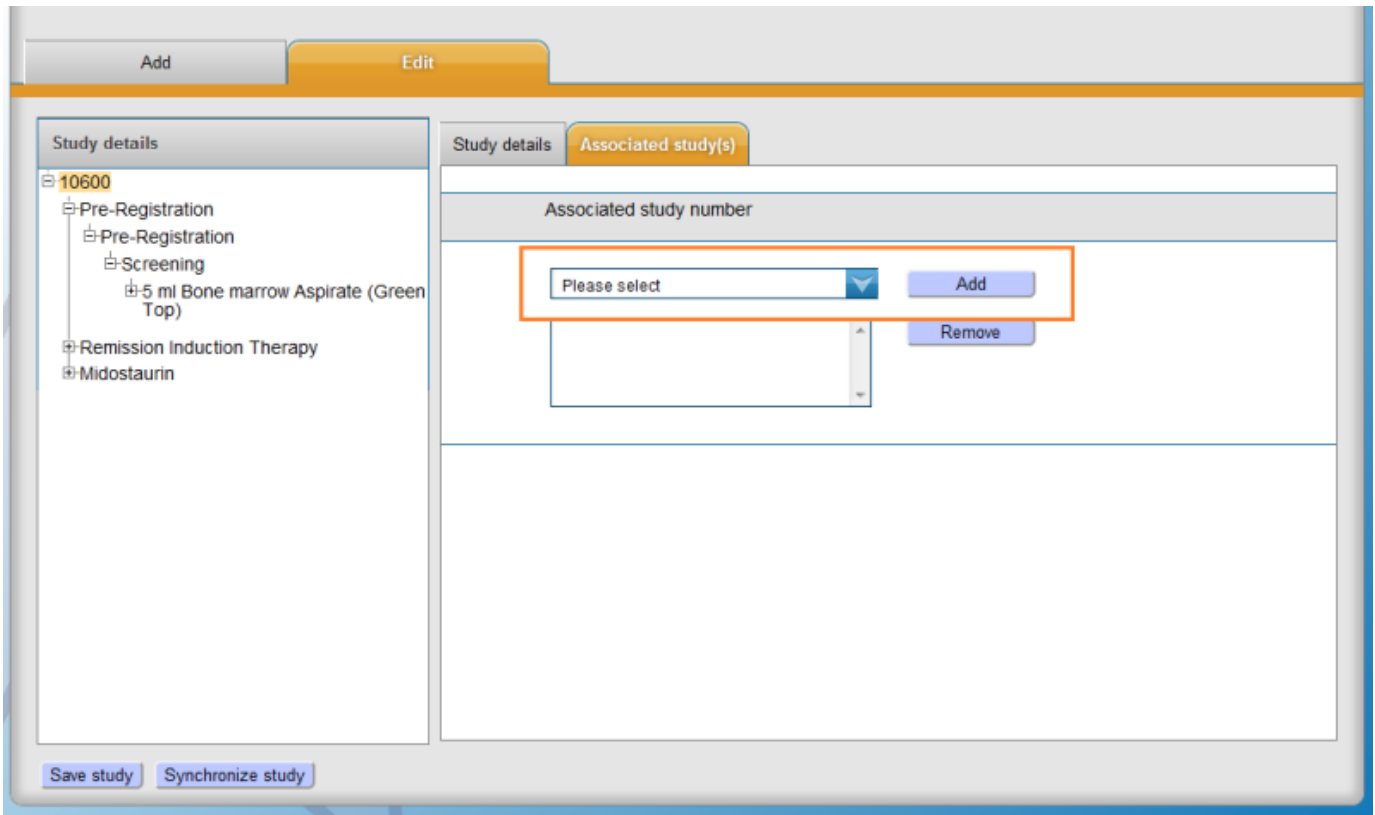


Add associate study0

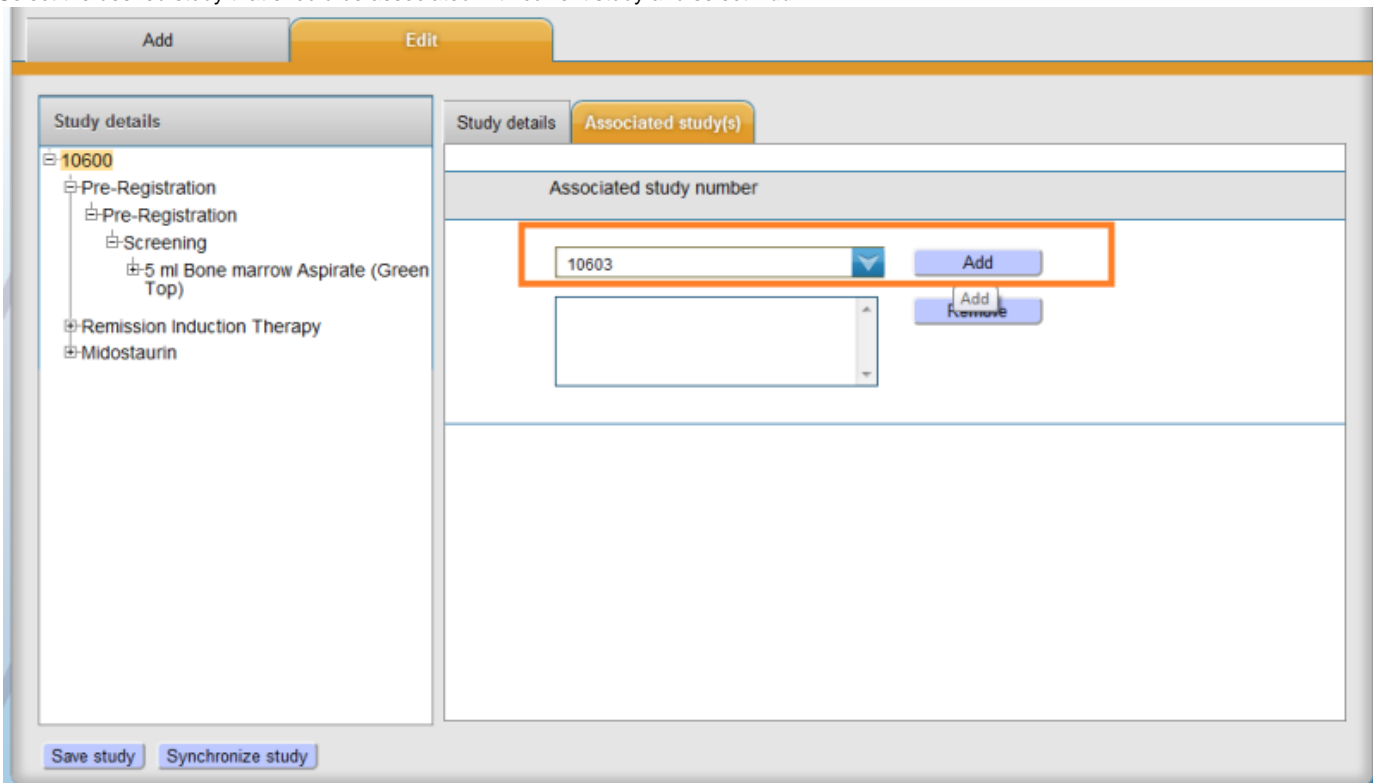
You may add any number of associated studies to a selected study. To add an associate study to an existing study, navigate to the desired study using [Search](#) [#id.elwy3aftu9nv] [study](#)
Select Associate study(s) tab for the desired study

The screenshot shows a web application interface for managing study details. At the top, there are two tabs: "Add" and "Edit". The "Edit" tab is active. Below the tabs, there are two main sections: "Study details" and "Associated study(s)". The "Study details" section on the left shows a tree view of study components for study ID 10600, including Pre-Registration, Screening, Remission Induction Therapy, and Midostaurin. The "Associated study(s)" section on the right is highlighted with a blue box and contains a form for adding an associated study. The form fields are: Alliance study number (10600), Title (10600 - Treatment study), Start date (07/01/2012), Author (Admin BMS), and Clinical diagnosis (Start typing here). A dropdown menu for Clinical diagnosis is open, showing a list of existing studies, including "[M]Dermatofibroma NOS" and "Abnormality of neurotensine secretion (disorde)". Buttons for "Add >>", "<< Remove", "Submit", and "Add epoch" are visible. At the bottom left, there are buttons for "Save study" and "Synchronize study".

System displays a dropdown where list of existing studies are displayed.



Select the desired study that should be associated with current study and select *Add*.



On selecting *Add* button, the selected study is added to list of associate studies for the current study (in this case 10600). You may add any number of associated studies for a study. To add more associated studies, select another study from dropdown and then select *Add* button. This would add the newly selected study into the list of selected associated studies that are existing.

Select *Study details* tab beside the *Associate study(s)* tab. Now select *Submit* and then select *Save study* button.

Selected study is associated to the current study. Now, you can add coincident events between the study and its associated studies.